

TRANZOVA WIRELESS TELEMETRY SYSTEM

Tranzova is a programmable telemetry device with two RS232 I/O Ports. It has a 16 bit micro controller that incorporates a comprehensive range of features. The data from the sensors are transmitted through GPRS network to a secured cloud server.

Highlights

- Real Time Data from Remote Detectors
- Quad-Band GPRS Support
- 16 Bit Microcontroller
- Two RS232 I/O Ports
- Custom Programmable
- Secure Data Transmission
- Rechargeable Battery Powered
- Durable Design for Harsh Environments
- IP-67 Level Protection
- Data Received at Secured Cloud Server

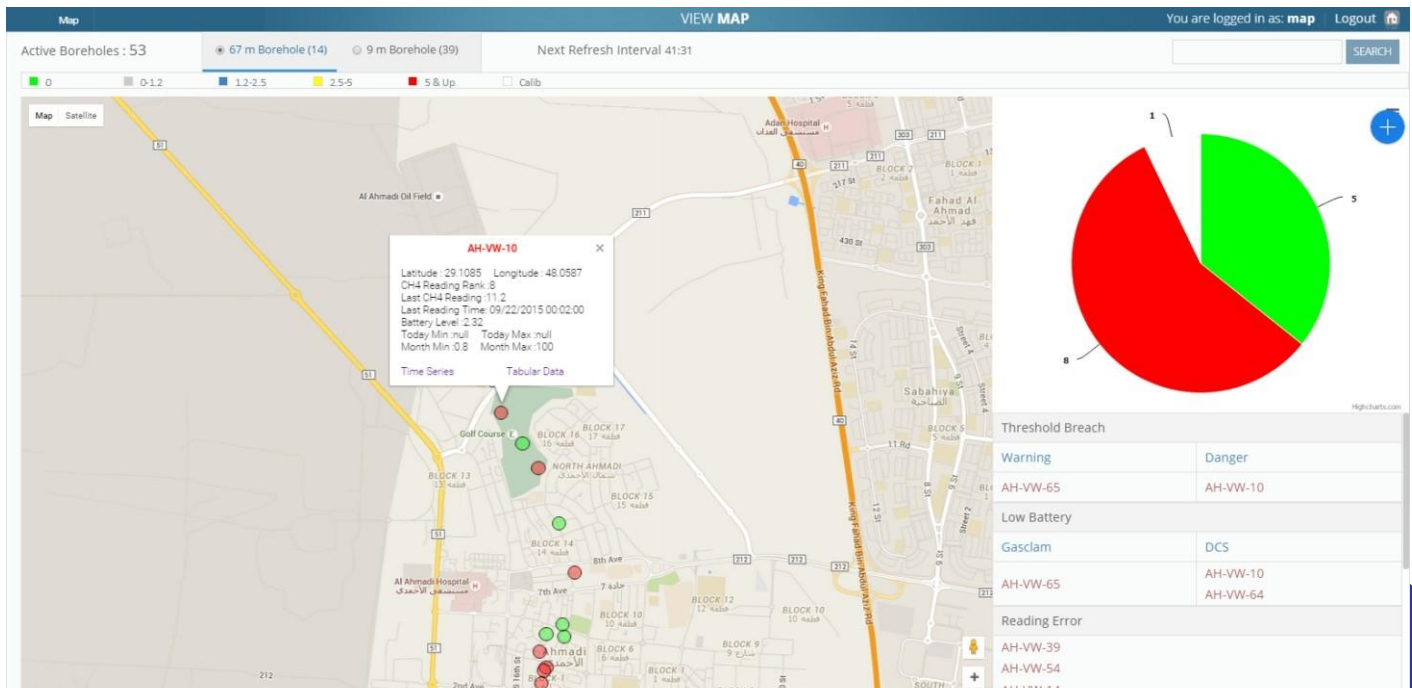
Advantages

- Ease of Use in Remote Areas - Wireless
- Faster Deployment
- Easy Relocation
- No Transmission Lines to be Cut or Broken.
- Functional Over a Wide Range of Operating Conditions
- Reduction of Travel and Labor Costs



tranzovâ
Toughened Telemetry

An easy to use software suite specially designed to display a detailed overview of measured values in real time



- Geo-Spatial Display of Readings
- Information Pop Ups
- Categorization Summaries
- SMS and E-mail Alerts
- Configurable Alert Ranges
- Reliable Cloud Hosting
- Easy to Understand
- Low Battery Alert

GENERAL SPECIFICATION

Model Number	TZ -SR2
Material	Stainless Steel 316 and HE-30
Ingress Protection	IP67
Weight	2.5 Kg
Dimension	12 X 12 X 22 cm

BATTERY SPECIFICATION

Battery	NiMH, 2.4V, 9500mAh, Rechargeable
Backup	4 Days at 15 Min Reading Interval

BOARD SPECIFICATION

Microcontroller	CORTEX M4
Operating Voltage	1.08 V ~ 3.63 V
Temperature range	0 to +50 Degree Celsius
Connectivity	2 Nos RS - 232, (Optional RS - 485)
Current (Max)	1A
Power (Max Loaded)	2.4 W

CONNECTIVITY

Data Transmission	GPRS
Software Updates	Over the Air
SIM	GSM
GSM	Quad-Band (850/ 900/ 1800/ 1900 MHz)
Connectors	Circular IP - 68 Serial Connectors

ANTENNA

GSM	Quad Band (850/900/1800/1900 MHz)
Environmental	IP 67, ROHS Compliant
Impedance	50Ω

AMBIENT CONDITIONS

Temperature	0°C to +50 °C
Relative Humidity	10% to 90%
Ingress Protection	IP67



Review Historical Readings

- Time Series and Data Table
- Export current or historical data to CSV files